

FLEXCUBE General Ledger Application Deployment in
Websphere

Oracle FLEXCUBE Universal Banking

Release 12.2.0.0.0

[May] [2016]



Table of Contents

- 1. FLEXCUBE GENERAL LEDGER APPLICATION FULL DEPLOYMENT 1-1**
 - 1.1 INTRODUCTION 1-1
 - 1.2 FULLY DEPLOYING FGL APPLICATION 1-1

- 2. FLEXCUBE GENERAL LEDGER APPLICATION PARTIAL DEPLOYMENT 2-1**
 - 2.1 INTRODUCTION 2-1
 - 2.2 PARTIALLY DEPLOYING FGL APPLICATION 2-1

1. FLEXCUBE General Ledger Application Full Deployment

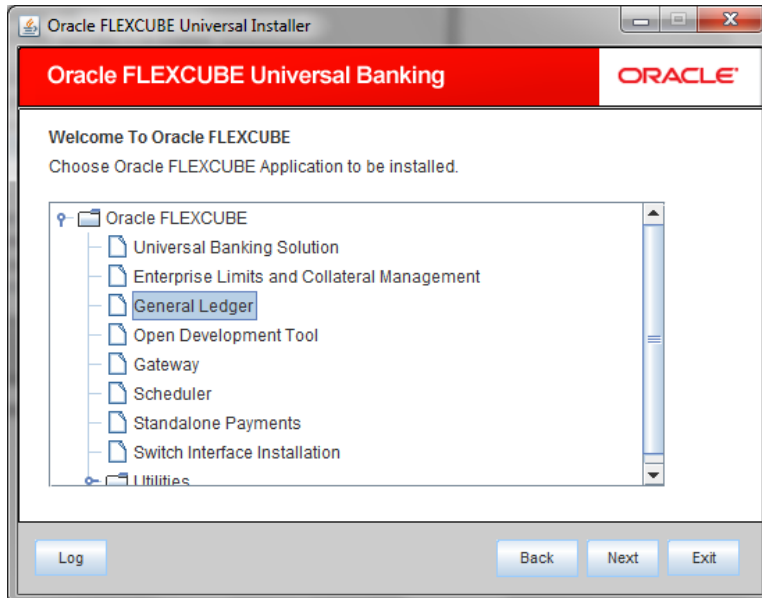
1.1 Introduction

This chapter explains the steps to install FLEXCUBE General Ledger (FGL) application.

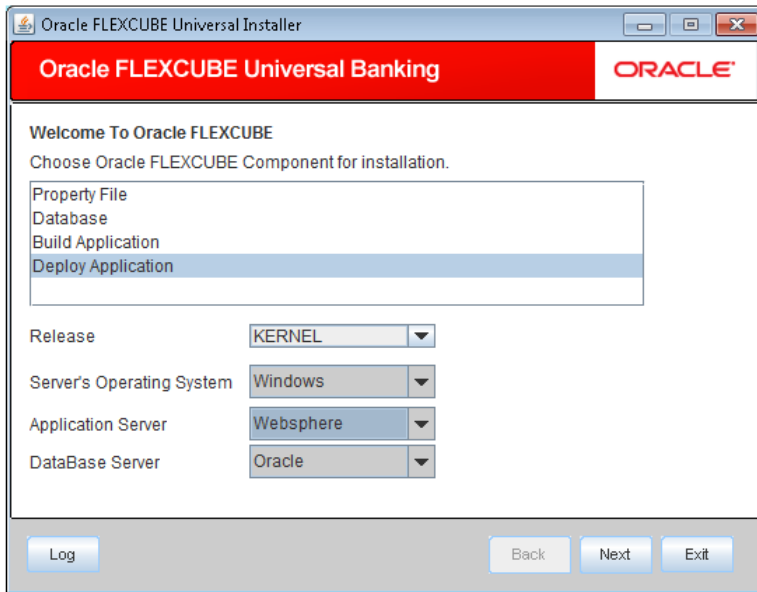
1.2 Fully Deploying FGL Application

To fully deploy the FGL application for Oracle FLEXCUBE Investor Servicing, follow the steps given below:

1. Launch Oracle FLEXCUBE Universal Banking Solution Installer.
2. Click 'Next'. Following screen is displayed:.



3. Select 'General Ledger'. Click 'Next'. Following screen is displayed:



6. Select 'Deploy Application'.
7. Specify the following details:

Release

Select the release in which you are installing the FGL application. Select the appropriate one from the drop-down list.

Server's Operating System

Select the server's operating system in which you are installing the FGL application. Select the appropriate one from the drop-down list.

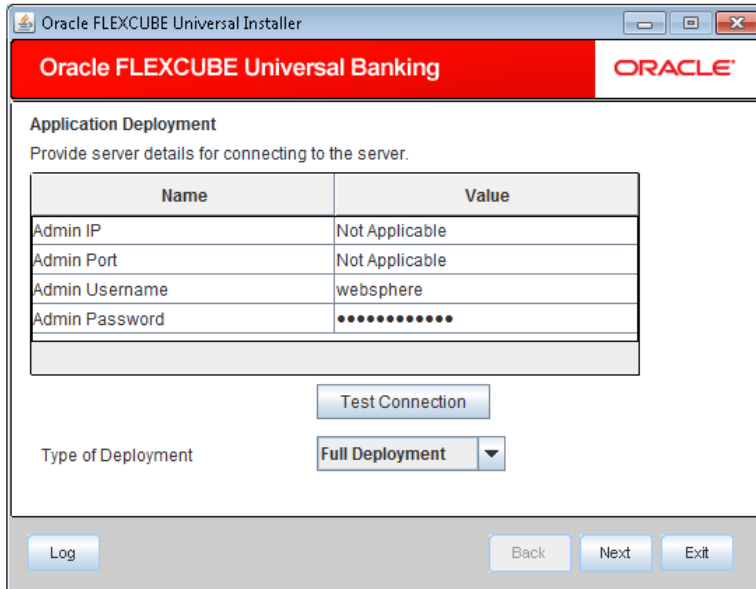
Application Server

Select 'Websphere' from the adjoining drop down list.

Database Server

Select the database server in which you are installing the FGL application. Select the appropriate one from the drop-down list.

8. Once you have specified all the details , click 'Next'. Following screen is displayed.



Specify the following details:

Admin IP

Not applicable.

Admin Port

Not applicable.

Admin UserName

Specify the admin username of the websphere application server.

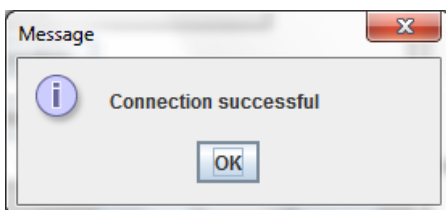
Admin Password

Specify the admin password of the websphere application server.

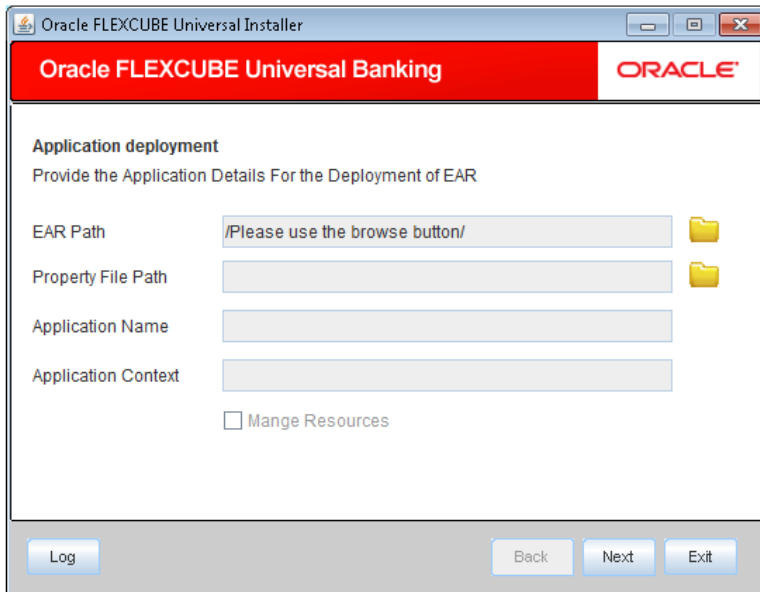
Type of Deployment

Select 'Full Deployment'.

.Click 'Test Connection' to test the connection with the application server. On successful connection, the following screen is displayed:




9. Click 'OK' and following screen is displayed:



Specify the following details:

EAR Path

Select the application EAR to be deployed using the browse button.

 The Application EAR path cannot be copied and pasted on to the text box, thereby demanding the use of the browse button to select the EAR.

Property File Path

If the property file is internal to the application EAR, it gets displayed here on selection of EAR path. If the property file is external, specify the location. You can use the directory button to browser and select the directory.

Application Name

Application name gets displayed on selection of EAR path.

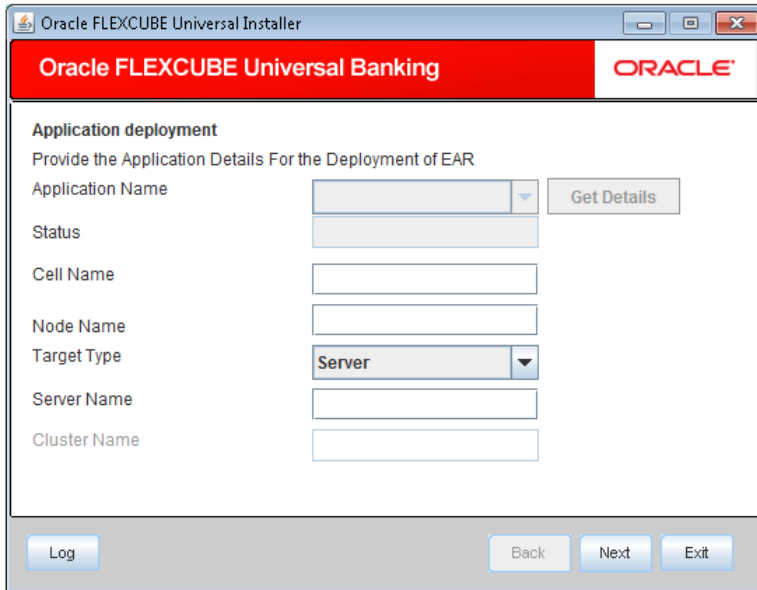
Application Context

Application context gets displayed on selection of EAR path.

Manage Resources

Not Applicable.

10. Click 'Next'. Following screen gets displayed:



11. Specify the following details:

Application Name

Not applicable

Status

Not applicable

Cell Name

Specify the appropriate cell name.

Node Name

Specify the appropriate node name.

Target Type

Select the target type from the adjoining drop down list. The options are:

- Server
- Cluster

Server Name

Specify the appropriate server name, if target type is selected as 'Server'.

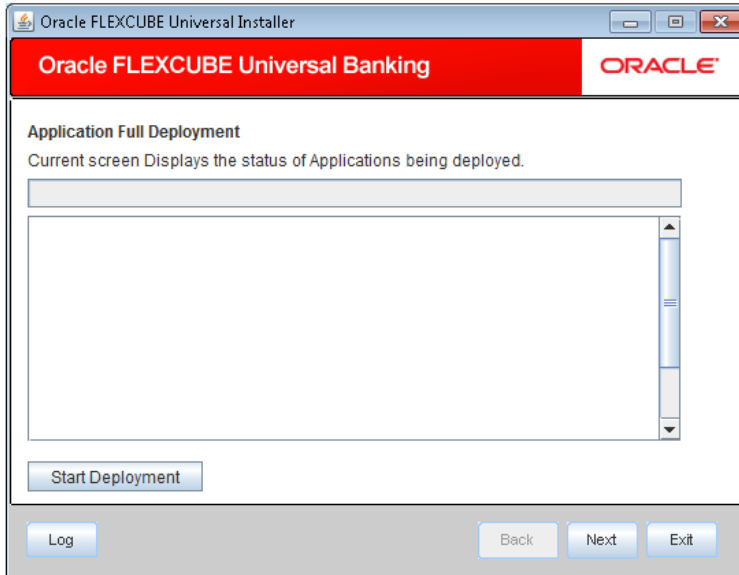
Cluster Name

Specify the appropriate cluster name, if target type is selected as 'Cluster'..



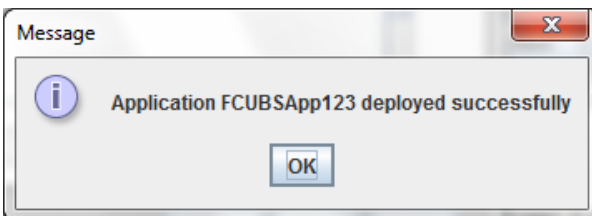
The values fed in the above screen are not validated at the screen level as a result of a limitation and hence, please provide accurate information.

12. Click 'Next'. Following screen gets displayed:

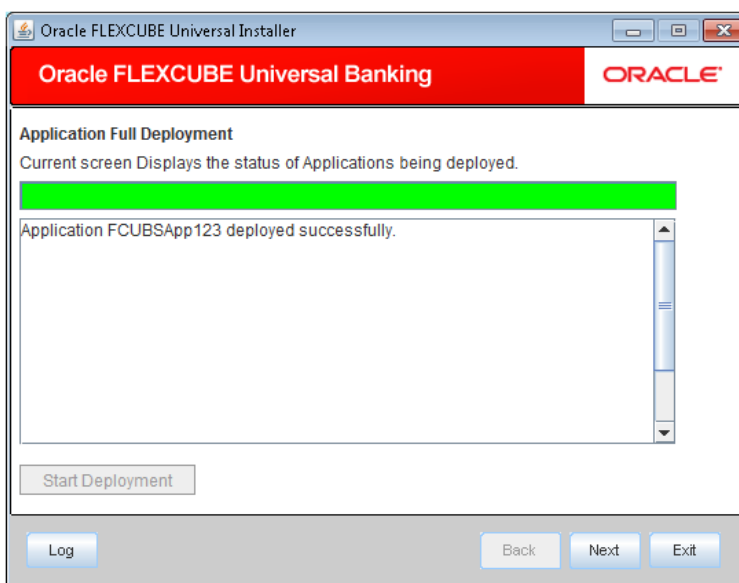


Click 'Start Deployment' to begin the process of application deployment.

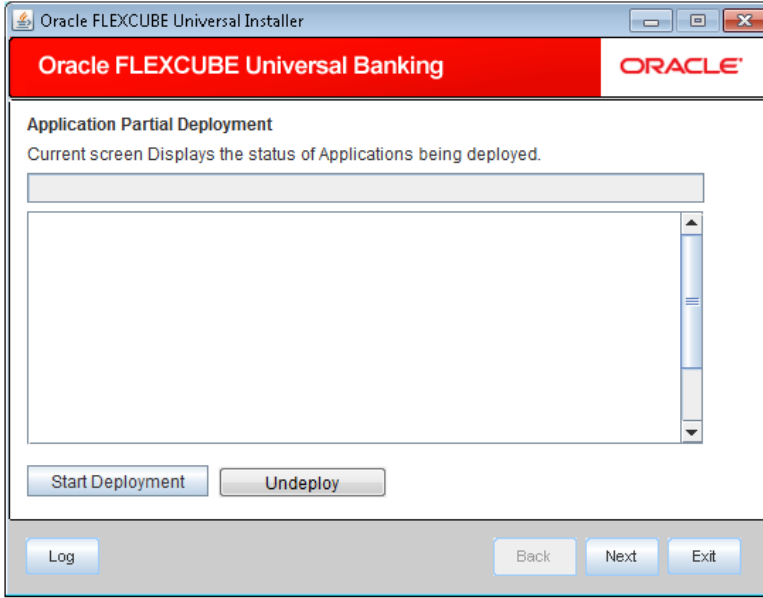
On successful deployment, the following screen is displayed:



13. Click 'OK'. Following screen is displayed:



14. On unsuccessful deployment the 'Undeploy' button gets enabled.



15. Click 'Undeploy' for undeploying the partially deployed EAR from the server.

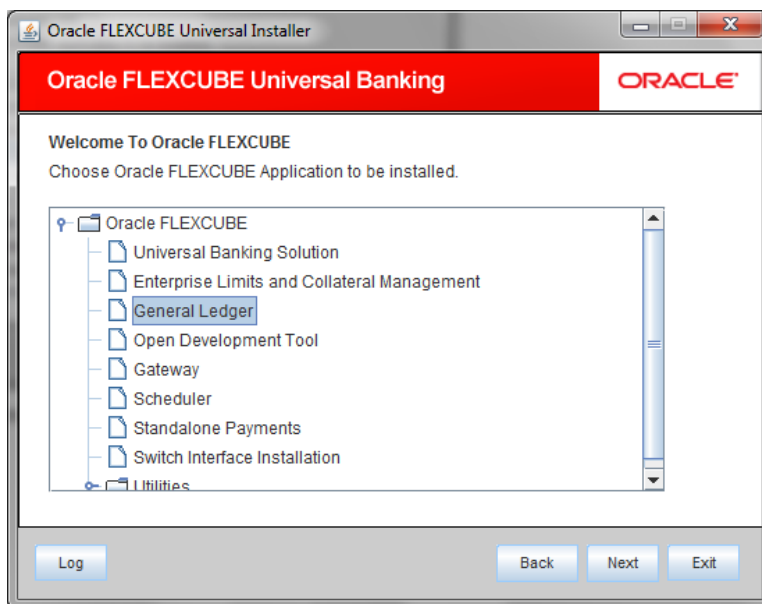
2. FLEXCUBE General Ledger Application Partial Deployment

2.1 Introduction

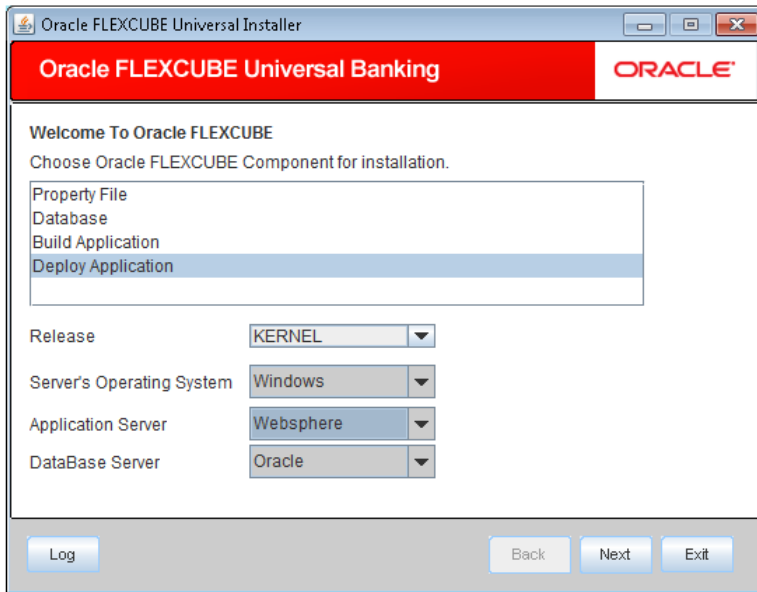
This chapter explains the steps to install FGL application.

2.2 Partially Deploying FGL Application

1. Launch Oracle FLEXCUBE Universal Banking Solution Installer.
2. Click 'Next'. Following screen is displayed:



3. Select 'General Ledger'.
4. Click 'Next'. Following screen is displayed:



5. Select 'Deploy Application'.
6. Specify the following details:

Release

Select the release in which you are installing the FGL application. Select the appropriate one from the drop-down list.

Server's Operating System

Select the server's operating system in which you are installing the FGL application. Select the appropriate one from the drop-down list.

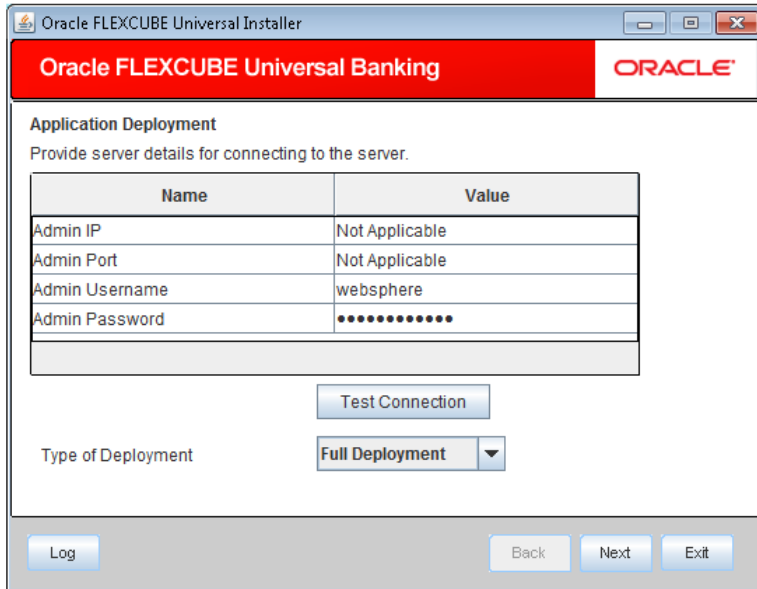
Application Server

Select 'Websphere' from the adjoining drop down list.

Database Server

Select the database server in which you are installing the FGL application. Choose the appropriate one from the drop-down list.

7. Once you have specified all the details , click 'Next'. Following screen is displayed.



8. Specify the following details:

Admin IP

Not applicable.

Admin Port

Not applicable.

Admin UserName

Specify the admin username of the websphere application server.

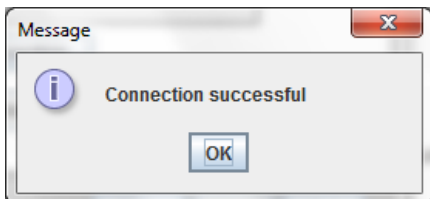
Admin Password

Specify the admin username of the websphere application server.

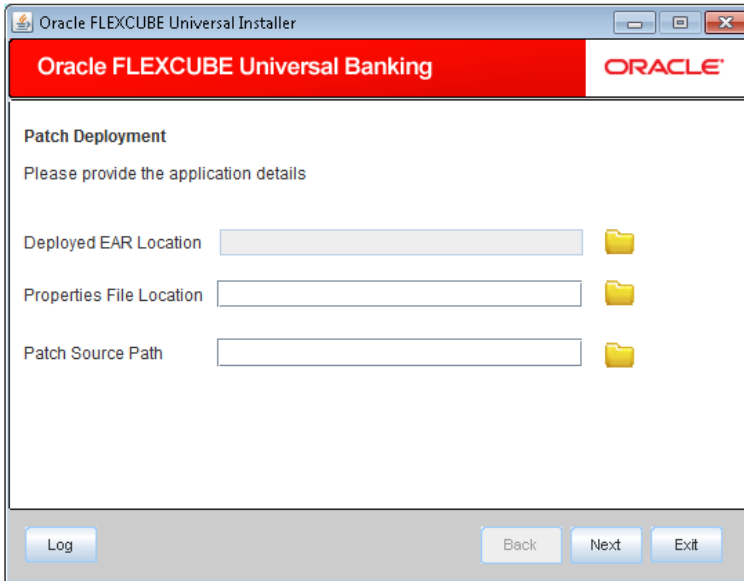
Type of Deployment

Select 'Partial Deployment'.

9. Click 'Test Connection' to test the connection with the application server. On successful connection, the following screen is displayed:



10. Click on 'OK' . Following screen is displayed:



11. Specify the following details:

Deployed EAR Location

Specify the valid deployed EAR location of the application that needs to be patched. You can use the directory button to browser and select the directory.

Ex. (LINUX) - /IBM/WebSphere/AppServer/profiles/AppSrv01/installedApps/xxxxx-PCNode01Cell/FCUBSApp.ear

Ex. (WINDOWS) - D:\IBM\WebSphere\AppServer\profiles\AppSrv01\installedApps\xxxxx-PCNode01Cell\FCUBSApp.ear

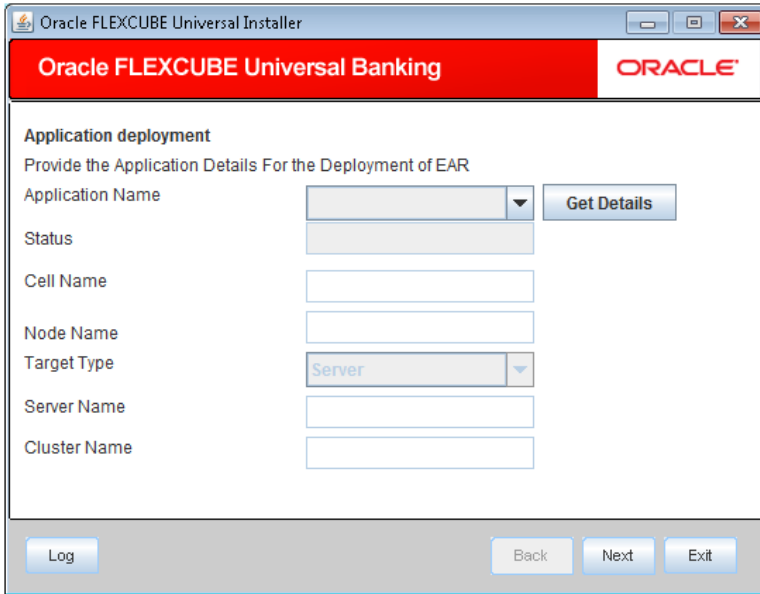
Property File Path

If the property file is internal to the application EAR, it gets displayed here on selection of EAR path. If the property file is external, specify the location. You can use the directory button to browser and select the directory.

Patch Source Path

Specify the valid patch source path. You can use the directory button to browser and select the directory..

12. Click 'Next'. Following screen is displayed:.



13. Specify the following details:

Click on 'Get Details' to list all the applications deployed on websphere application server.



The Installer would take 10-15 seconds of processing time to fetch the details.

Application Name

Select the application be patched from the adjoining dropdown list.



The Installer would take 7-10 seconds of processing time to fetch the Status, Cell Name and Node Name on selection of the Application Name

Status

Status gets displayed on selection of the application name.

Cell Name

Cell name gets displayed on selection of the application name if the the application is UP.

Node Name

Node name gets displayed on selection of the application name, if the application is UP.

Target Type

Not applicable for application partial deployment.

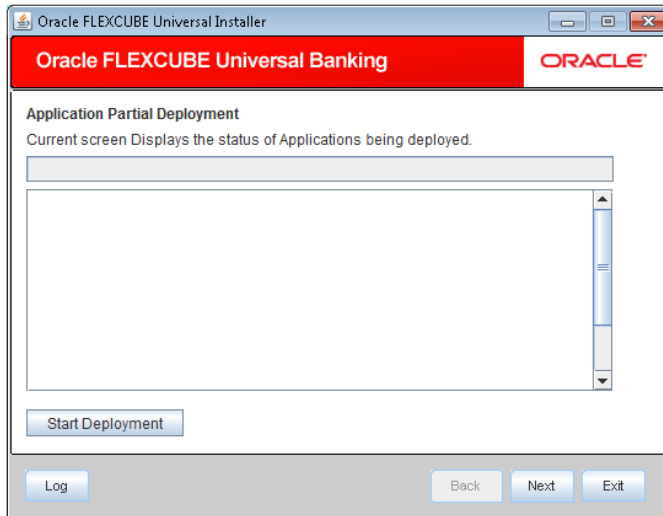
Server Name

Not applicable for application partial deployment.

Cluster Name

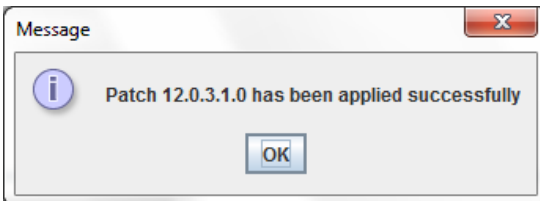
Not applicable for application partial deployment.

14. Click 'Next'. Following screen is displayed:

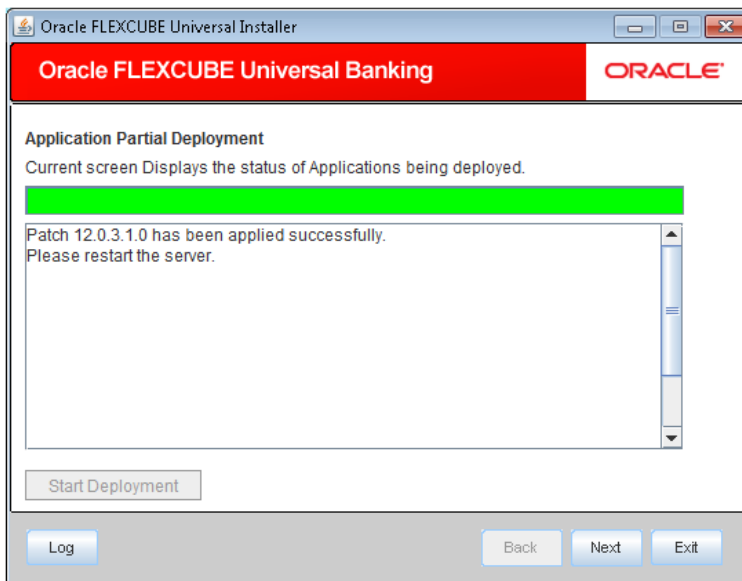


15. Click 'Start Deployment' to start the partial/patch deployment.

16. On successful partial deployment, following screen is displayed:



17. Click 'OK' and the following screen is displayed:



18. Restart the server for changes pertaining to the deployed patch to reflect.



General Ledger Application Deployment in Websphere
[May] [2016]
Version 12.2.0.0.0

Oracle Financial Services Software Limited
Oracle Park
Off Western Express Highway
Goregaon (East)
Mumbai, Maharashtra 400 063
India

Worldwide Inquiries:
Phone: +91 22 6718 3000
Fax: +91 22 6718 3001
www.oracle.com/financialservices/

Copyright © 2007, 2016, Oracle and/or its affiliates. All rights reserved.

Oracle and Java are registered trademarks of Oracle and/or its affiliates. Other names may be trademarks of their respective owners.

U.S. GOVERNMENT END USERS: Oracle programs, including any operating system, integrated software, any programs installed on the hardware, and/or documentation, delivered to U.S. Government end users are "commercial computer software" pursuant to the applicable Federal Acquisition Regulation and agency-specific supplemental regulations. As such, use, duplication, disclosure, modification, and adaptation of the programs, including any operating system, integrated software, any programs installed on the hardware, and/or documentation, shall be subject to license terms and license restrictions applicable to the programs. No other rights are granted to the U.S. Government.

This software or hardware is developed for general use in a variety of information management applications. It is not developed or intended for use in any inherently dangerous applications, including applications that may create a risk of personal injury. If you use this software or hardware in dangerous applications, then you shall be responsible to take all appropriate failsafe, backup, redundancy, and other measures to ensure its safe use. Oracle Corporation and its affiliates disclaim any liability for any damages caused by use of this software or hardware in dangerous applications.

This software and related documentation are provided under a license agreement containing restrictions on use and disclosure and are protected by intellectual property laws. Except as expressly permitted in your license agreement or allowed by law, you may not use, copy, reproduce, translate, broadcast, modify, license, transmit, distribute, exhibit, perform, publish or display any part, in any form, or by any means. Reverse engineering, disassembly, or decompilation of this software, unless required by law for interoperability, is prohibited.

The information contained herein is subject to change without notice and is not warranted to be error-free. If you find any errors, please report them to us in writing.

This software or hardware and documentation may provide access to or information on content, products and services from third parties. Oracle Corporation and its affiliates are not responsible for and expressly disclaim all warranties of any kind with respect to third-party content, products, and services. Oracle Corporation and its affiliates will not be responsible for any loss, costs, or damages incurred due to your access to or use of third-party content, products, or services.